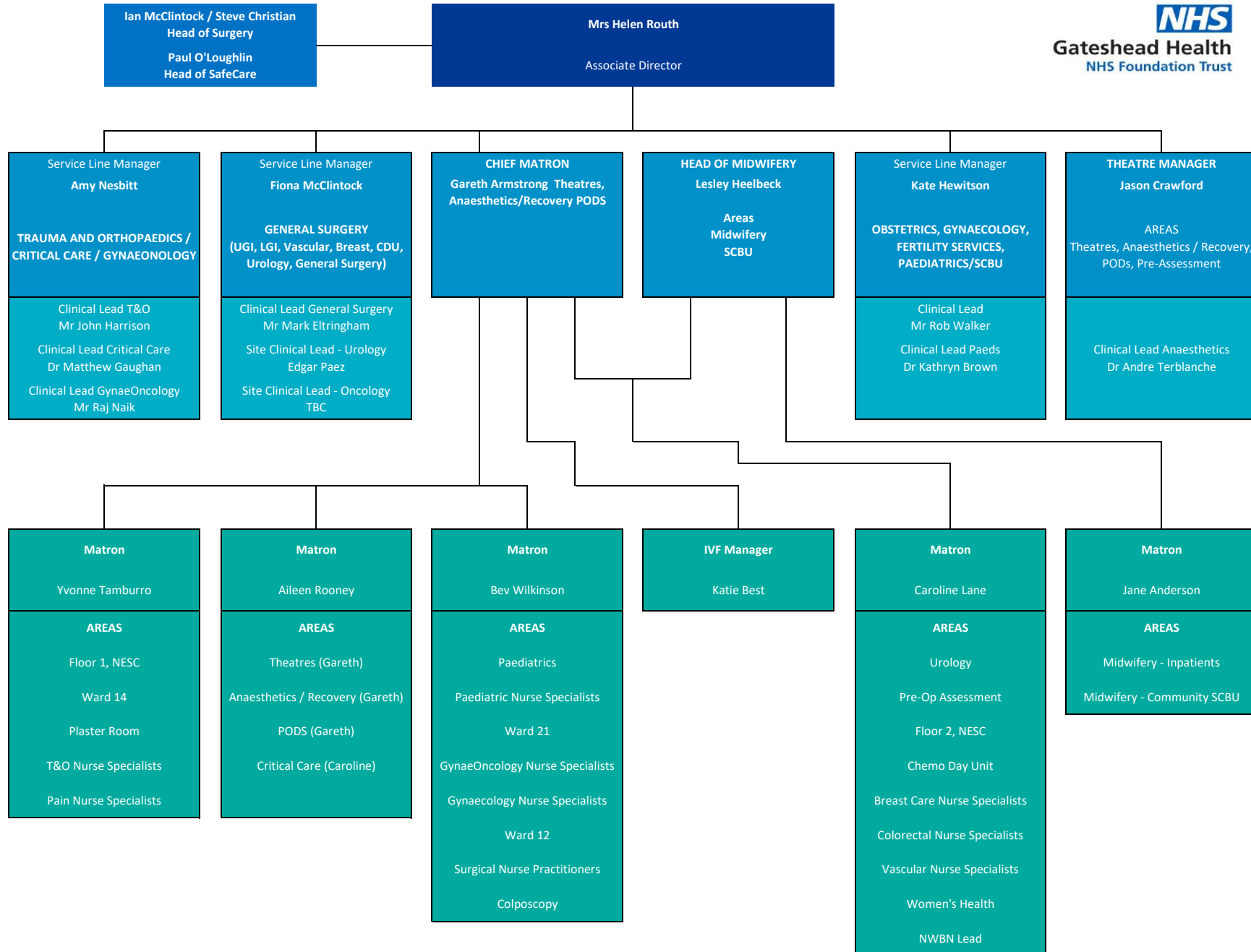


# Surgical Business Unit Management Structure



<b>DIVISION</b>
<b>Surgical Services</b>
<b>Associate Director</b>
Mr Steve Atkinson
Trauma and Orthopaedics
General surgery
<small>(breast, colorectal and pelvic floor, upper GI, vascular)</small>
Gynaecology
Gynaecology
Obstetrics and maternity
<small>(including community midwifery)</small>
IVF
Chemotherapy Day Unit
Critical Care
Pain
Anaesthetics
Urology
<small>(hub and spoke with Newcastle)</small>
Pre-operative Assessment
Operating Theatres

<b>DIVISION</b>
<b>Medical Services</b>
<b>Associate Director</b>
Ms Claire Hesketh
Emergency Admissions (A&E)
Emergency Admissions Unit
12 medical specialities including outpatients
11 wards:
<small>1, 2, 24 &amp; 25 - Elderly Care</small>
<small>23 - Dual Care (mental health and elderly)</small>
<small>3 - Short Stay</small>
<small>4 - Respiratory</small>
<small>8 - Cardiology</small>
<small>11 - Gastroenterology</small>
<small>12 - Rheumatology and Haematology</small>
<small>22 - Stroke</small>
7 other units:
<small>Jubilee Day Hospital</small>
<small>St Bede's - Palliative Care Unit (day and inpatient)</small>
<small>Craggside Court - inpatient elderly care mental health (organic)</small>
<small>Sunnyside - inpatient elderly care mental health (functional)</small>
<small>Woodside Unit - day care for younger people with dementia</small>
<small>Ellison Unit - day care for elderly people with dementia</small>
<small>ICAR - Intermediate Care Facility in Houghton-le-Spring</small>
<small>Paediatric Unit including SCBU</small>
Walk-In Centres

<b>DIVISION</b>
<b>Assessment and Diagnostic Services</b>
<b>Associate Director</b>
Mrs Claire Coyne
Pathology
Diagnostic Imaging
Physiotherapy
Orthotics
OPD
ENT and Audiology
Endoscopy
Breast Screening
Dietetics
AAA Screening NE and Cumbria
Bowel Cancer Screening