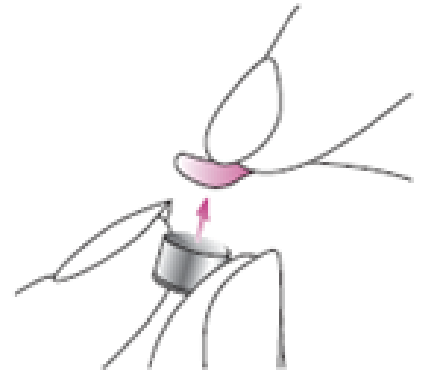


## Changing the battery

Remove the protective foil from the new battery (right).



## Inserting the battery

The Micro, M, SP, UP, Moda II & Yuu HP hearing aid(s) use a similar type of battery compartment. The UP is used in the following example for how the battery is changed.

Take the hearing aid(s) in your hand and open the battery door (1). Insert the battery so that you see the + symbol on the battery (2).

To turn the aid(s) back on, simply close the battery door.

